

# Optolite Slim

## General Purpose Flood Light

The Optolite Slim is a general purpose floodlight suitable in a wide variety of application from gardens and back yards to car parks and sports areas.

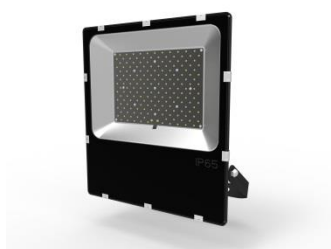
By the use of SMD technology for the LED the Slim is compact and low profile whilst still giving good heat dissipation.

Powers from 10W to 200W are possible.

The body is made from die-cast aluminium with a tempered glass front. The glass is fixed with clips to ensure a secure and watertight seal.

Rated to IP 65 the Optolite Slim can be safely used both indoors and outdoors.

50W and higher are also fitted with a respirator to prevent misting.



### Features

- ✓ Slim case
- ✓ High power
- ✓ Wide beam

### Replaces

- ✓ MH to 400W
- ✓ Halogen to 1000W
- ✓ SON to 500W

### Applications

- ✓ Gardens
- ✓ Sports venues
- ✓ Parking lots

Model	Optolite Slim							
Power	10W	20W	30W	50W	80W	100W	150W	200W
Light Output	>800Lm	>1600Lm	>2400Lm	>4000Lm	>6400Lm	>8000Lm	>12000Lm	>16000Lm
Dimensions Body	145*155*32	148*165*32	194*222*48	265*308*65	265*308*65	308*348*65	347*383*65	385*430*65
Input Voltage	85-265V 50/60Hz							
Beam Angle	120°							
CRI	>70							
IP Grade	IP65							
Colours	3000K, 4000K, 6000K							

Details subject to change without notice

### European Headquarters.

#### Magnatech LED (UK) Ltd.

Magna House  
Dales Manor Business Park  
Cambridge CB22 3TJ. U.K.  
Tel: +44 (0)1223 834800  
Email: sales@magnatechled.co.uk

### Global Sales and Manufacturing

#### Huizhou Magnatech LED

4<sup>th</sup> Floor, Building A, Tianhao Industrial Park  
Zhongkai Hi-Tech Industrial Area  
Huizhou City, GuangDong, China  
Tel: +86 (0) 752 5707 468  
Email: info@magnatechled.com