

Optolite Slim

General Purpose Flood Light

The Optolite Slim is a general purpose floodlight suitable in a wide variety of application from gardens and back yards to car parks and sports areas.

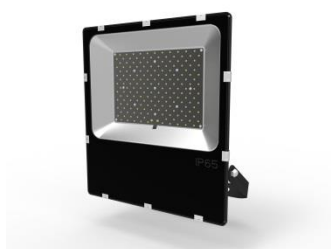
By the use of SMD technology for the LED the Slim is compact and low profile whilst still giving good heat dissipation.

Powers from 10W to 240W are possible.

The body is made from die-cast aluminium with a tempered glass front. The glass is fixed with clips to ensure a secure and watertight seal.

Rated to IP 65 the Optolite Slim can be safely used both indoors and outdoors.

50W and higher are also fitted with a respirator to prevent misting.



Features

- ✓ Slim case
- ✓ High power
- ✓ Wide beam

Replaces

- ✓ MH to 400W
- ✓ Halogen to 1000W
- ✓ SON to 500W

Applications

- ✓ Gardens
- ✓ Sports venues
- ✓ Parking lots

Model	Optolite Slim							
Power	10W	20W	30W	50W	100W	150W	200W	240W
Light Output	>800Lm	>1600Lm	>2400Lm	>4000Lm	>8000Lm	>12000Lm	>16000Lm	>1920Lm
Dimensions Body	145*155*32	148*165*32	194*222*48	265*308*65	265*308*65	308*348*65	347*383*65	385*430*65
Input Voltage	85-265V 50/60Hz							
Beam Angle	120°							
CRI	>70							
IP Grade	IP65							
Colours	3000K, 4000K, 6000K							

Details subject to change without notice

European Headquarters.

Magnatech LED (UK) Ltd.

Magna House
Dales Manor Business Park
Cambridge CB22 3TJ. U.K.
Tel: +44 (0)1223 834800
Email: sales@magnatechled.co.uk

Global Sales and Manufacturing

Huizhou Magnatech LED

4th Floor, Building A, Tianhao Industrial Park
Zhongkai Hi-Tech Industrial Area
Huizhou City, GuangDong, China
Tel: +86 (0) 752 5707 468
Email: info@magnatechled.com